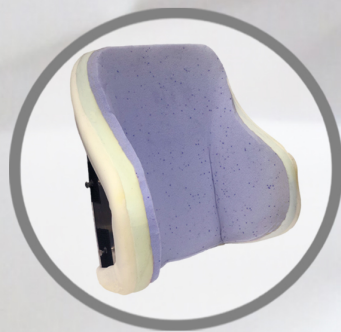


The
Fusion
line of seating products
BACKS



Maple Leaf WHEELCHAIR

Specifications

Fusion Line

- ◆ Get Infused Foam
- ◆ Lightweight Aluminum Shells
- ◆ Pre-Punched For Headrests and Laterals
- ◆ Angle Adjustable Mounting Hardware
- ◆ 1 year warranty on back
- ◆ 90 day warranty on cover

Visit our website for a full list of standard and additional options

www.mapleleafwheelchair.ca



- ◆ Newly Designed Cover And Hardware That Allows For Smooth & Easy Installation

The **Fusion1**

The Fusion1 is the first in our newest line seating products. We have redesigned our shallow shell to improve the users comfort. The laterals are less aggressive to provide maximum support with less restriction.



The **Fusion2**

The Fusion2 combines the support of a deep lateral shell with the comfort of our new Gel Infused Foam. The laterals are 8" Deep.



The **Fusion3**

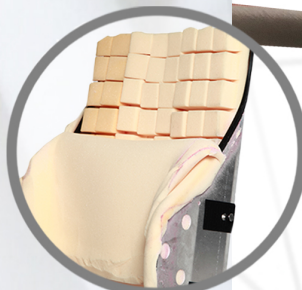
The Fusion3 offers midline support of the torsoe without constricting the hips. The laterals are placed higher up and is the perfect solution for users that are "pear-shaped"



The **Fusion** *Essential*

The Fusion Essential is designed specfially for users with unique seating needs. It comes complete with pre-cut cubed foam that can be removed to customize the back to fit any user.

Available in a Shallow, Deep and Mid Shells





Maple Leaf WHEELCHAIR

Back Rest Sizing Fusion & ML Line

- ♦ Standard Sizing
 - ♦ 16", 18" & 20" Widths
 - ♦ 18" Standard Back Height
 - ♦ 16" & 20" Back Heights on the ML Slim
- ♦ Custom Sizing
 - ♦ All Custom Widths & Back Heights Available

Available Options

- ♦ Also Available Our Tension Adjustable Back Sling Upholstery

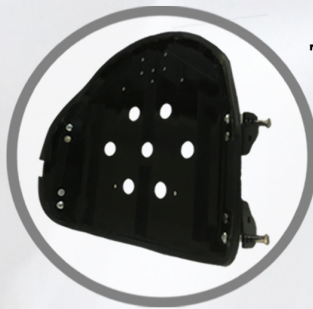


- ♦ Waterproof Teck4 Cover Available For Infection Control



Visit our website for a full list of standard and additional options

www.mapleleafwheelchair.ca



The **ML**ine of seating products BACKS

MLShallow

The ML Shallow is our basic back that features mild laterals and is suited for users needing moderate support.



MLKyphotic

The ML Kyphotic is designed to accommodate patients with kyphosis. This new back will allow patients to sit back into the chair maximizing comfort. This is shown to improve patients' vertical field of vision. The adjustable tension straps allow for various degrees of kyphotic submersion. The ML Kyphotic is available in a Shallow, Deep or Mid shell.



MLSlim

Is the newest addition to our ML Line. It is a sports back designed for maximum comfort with a less invasive contour. This back is available at multiple heights, and can be customized to maximize the users fit. The ML Slim weighs only 2.5 lbs, making it one of the lightest backs on the market.



It come complete with our newest foam;
"Gel Infused Foam"

